

# Longden CE Primary School and Nursery Newsletter - Friday 25th October 2024



---

*What a fast half term that was! It doesn't seem long since I was writing to welcome you back after the summer holiday. Next week is the half term break, and we return to school on Monday 4th November. Thank you for getting your children in to school for 8.30am, when learning begins and the register is taken. It makes such a difference to start the day with all of the children present and ready for the day ahead.*

*As we move towards colder days, please remind your child to bring their coat to school, and we ask that any gloves, hats and scarves are named so we can return them to their owner if found.*

*Our Christmas performances will soon be here, and we are looking forwards to the excitement and joy this time of year brings, it is such a lovely half term.*

*Keep safe over the holiday and see you soon.*

*Sally Johnson*

---

Today is PTA Donut Fri-YAY!



---

*Date: Friday 25th October*

*Time: 3pm*

*Location: Outside Mrs Portman's Classroom*

*Price: £1*

*Don't miss out on our Donut Fri-Yay!*

*Delicious chocolate or white iced and sugared donuts will be available.*

*If you don't want to miss out, please pre-book via ParentPay.*

*We will also be accepting cash payments on the day.*

*See you there!*

*From the PTA :-)*

---

Poppy Appeal 2024

---

*Poppy Appeal 2024*

*We are pleased to be supporting the British Legion's Poppy Appeal again this year.*

*Oak class are helping again by selling poppies and other items at school.*

*Orders can be placed via ParentPay until Thursday the 7th of November 2024. Oak pupils will organise the delivery of items to your child's class on Thursday and Friday ahead of Remembrance Day.*

*The British Legion have recommended various minimum donations. When making your donation, please specify what your donation is for e.g. £1 for two poppies, £3 for two snap bands etc. We have limited supplies and whilst we will do our best to fulfil all orders, if your chosen items are unavailable we will substitute with other items of a similar value. Suggested donations are:*

***Stickers, 50p (45 available)***

***Traditional Paper Poppies - 50p (90 available)***

***Reflector Poppies - 50p (55 available)***

***Adjustable Bracelets- £1.50 (70 available)***

***Snap Bands - £1.50 (100 available)***

*Thank you, in advance, for your continued generosity and support.*

*Best wishes on behalf of Oak Class Pupils*



## Tempest Photography - Individual & Sibling photos - **Orders**

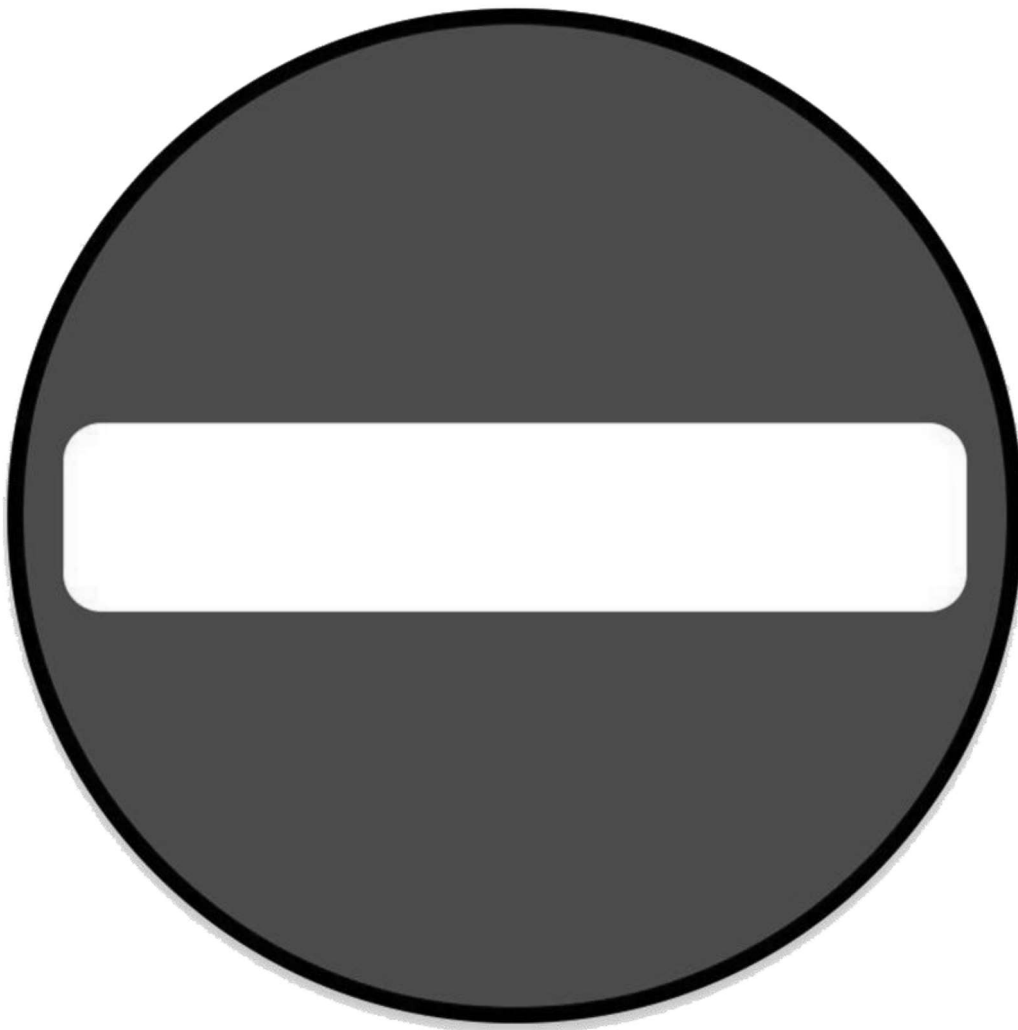
---

*A reminder that individual and sibling school photographs are available to order now.*

*For free school delivery, please ensure your completed order form is returned to school by **Friday 25th October 2024 at 3pm.***

---

## **Use of the school driveway and car park - staff and authorised visitors only**



---

*Please remember to park on Plealey Lane when bringing your child(ren) to and from clubs before and after the school day. The school drive is busy with staff and authorised visitors throughout the day. We want to avoid pedestrians and vehicles using this access at the same time, and so reducing the number of vehicles using this access is of benefit to us all.*

Thank you for your understanding.

## Clubs for Autumn Term 2 - available to book now on ParentPay!

Longden CE Primary School & Nursery					
After School Sports and Activity Clubs Autumn Term 2 (w/c 4th November - w/c 9th December 2024)					
Day	Club	Details	Time	Cost	Age Groups and Tutors
Tuesday	Football	The group will be split into three teams based on age/ability (YR1/2; Y3/4; YR5/6)	3:15pm-4:15pm	£3.50 per session	For Years 1- 6: run by Passmaster coaches
Tuesday	Loopy Loos Drama	Drama and Performing Arts Club	3:15pm-4:15pm	£3.50 per session	For Years 3-6: with Lucy Lowrie-Herz
Wednesday	Jammy Dodgers	'Jammy Dodgers' - a multi skills fun club with small sided games. Run by an experienced PE coach, Sasha, from Passmasters	3:15pm-4:15pm	£3.50 per session	For Reception, Year 1 and Year 2: run by Passmaster coaches
Wednesday	Ukulele Club	Years 2 and 3 from beginner level (max of 15 children)	3:15pm-4:15pm	No charge	Years 2 and 3: with Mr Higgs
Thursday	Livewires	Inclusive fun club from Reception to Year 6, aimed at children with disabilities or those who may need a little encouragement to participate in sport. Child-led fun games and activities with a focus on keeping fit and active whilst building friendships.	3:15pm-4:15pm	£3.50 per session	For Reception to Year 6: run by Passmaster coaches

Please note: To sign up for any after school clubs please log into ParentPay and click on the Yellow Banner on the homepage. All clubs are available to book in blocks every half term. Please book before the start of each half term to ensure your child's name is on the register. \*All clubs will run from w/c 04/11/2024 until w/c 09/12/24. Please note we accept tax free childcare vouchers for payment of sports and activity clubs. Please enquire at the school office for further information.

See details of all clubs for this half term on our website here<sup>1</sup>

## PTA Disco - Friday 8th November 2024



Date: Friday 8th November

Time: 5.30-6.30pm

Location: School Hall

Price: £4 per child

<sup>1</sup><https://primarysite-prod-sorted.s3.amazonaws.com/longden-shropshire/UploadedDocument/dfd77b50-92a6-4e05-a1db-183cebe8b711/after-school-sports-and-activities-clubs-info-as-at-25.10.24.pdf>

*We are organising a fun School Disco!*

*Drink & biscuit included.*

*Book your child's ticket via ParentPay.*

*Please purchase tickets by Thursday 7th November.*

*No entry if your name isn't on the list – no payments at the door.*

*Primary School Children, Reception\*- Year 6*

*\*Please note that all reception aged children will need a parent/carer to remain on-site.*

*We look forward to seeing you there.*

*The PTA :-)*

---

Forest School - things we always need!



Secondary Application deadline – 31 October 2024

---

*The closing date for secondary applications is 31 October 2024 which falls in the half-term holidays. If you have not already done so, we encourage you to submit an application as soon as possible but before the deadline date. This will ensure that if you encounter any problems, you can be supported/helped and to submit your application on time. There is no grace period for late applications.*

The link for the website is <https://next.shropshire.gov.uk/school-admissions/apply-to-start-or-transfer-school/transferring-to-secondary-school/>The School Admissions Team strongly encourage parents to name three preferences, particularly if you reside in the Shrewsbury area. Please see the Parents' Guide to Education in Shropshire Booklet for further information.

The link to the document is <https://next.shropshire.gov.uk/school-admissions/parents-guide-to-education/>If you have already made an application and wish to add additional preferences please contact [school-admissions@shropshire.gov.uk](mailto:school-admissions@shropshire.gov.uk)

---

Dear parents and carers,

## PTA Update

---

We have a new joint chair as Clare Mottram has joined Nicky Drew in this position with Laura Mottram taking up the role as treasurer, Ali Eaton becoming minutes secretary and Rachael Davies continuing her role as publicity secretary.

Thank you to Rowan Metliss who remains on the committee but has stepped down as treasurer after many years of being in this role. Welcome to Samara Pateman who has joined the committee.

The video<sup>2</sup> that can be seen on the school website highlights the work the PTA do and celebrates last year's achievements.

Thank you to all of you for your support.

I have been a member of the PTA for many years and the amount of money raised each year goes up and up. If it wasn't for your help with this then the children wouldn't enjoy the trips they have or enjoy the puppet show each year as well as other things shown in the video.

Thank you again,

Best wishes,

Mrs Portman

---

PTA Appeal - ASDA Cashpots for Schools - Please act now to raise funds for our school

We've got some exciting news to share with you.

---

<sup>2</sup><https://longden-shropshire.secure-primariesite.net/longden-pta/>

Parentkind – a charity that supports school PTAs - have teamed up with Asda, who is making millions of pounds available to donate to primary schools across the UK through their 'Cashpot for Schools' initiative. To support our school, all you have to do is opt-in through the Asda Rewards app, shop and scan in store or shop online at Asda.com.

Between 2nd September and 30th November 2024 – every time you shop with Asda using your Asda Rewards app, Asda will donate 0.5% of the value of your shop to your chosen Primary school. Also, every time somebody opts-in to support our Primary school, Asda will give an additional £1 to the school Cashpot. Plus, it doesn't stop there – Asda are also giving £50 to every school to get them started.

The supermarket has joined forces with Joe Wicks to support the initiative – look out for the TV advert, radio ads and social media coverage!

### **It's as easy as 1,2,3**

1. Download the Asda Rewards app, register and opt-in to Cashpot for Schools (make sure you have the latest version of the app installed)

<https://apps.apple.com/gb/app/asda-rewards/id1578902078>

[https://play.google.com/store/apps/details?id=com.asda.rewards&pcampaignid=web\\_share](https://play.google.com/store/apps/details?id=com.asda.rewards&pcampaignid=web_share)

2. Choose our Primary School – either searching by name or postcode

3. Shop instore across Asda and George, or online at Asda.com and start filling your Cashpot as you shop

Asda does the rest, all money raised will be donated to schools to spend on the things they need the most. We are aiming to spend our donations on *new IT Equipment*.

Remember, anyone can sign up – so start spreading the news and raising funds for our school.

This initiative is on top of the existing Asda Rewards benefits you get as a shopper – so you won't lose out on any of your own earnings or Cashpot, so everyone is a winner!

For more details, visit [asda.com/cashpotforschools](https://asda.com/cashpotforschools)

**So far we have raised £111.19! Many thanks**

# INTRODUCING CASHPOT FOR SCHOOLS

Download and opt-in with Asda Rewards  
and we will donate ££s to schools.

**CASHPOT FOR SCHOOLS**

Only with **ASDA Rewards**

Download and opt-in today

With **Parentkind**

**HERE'S HOW:**

- 1 Download the Asda Rewards app and opt-in to Cashpot for Schools.
- 2 Choose your primary school
- 3 Shop in-store across Asda & George, and scan your Asda Rewards app at the checkout.
- 4 Shopping online? Simply log in to Asda.com using the same details as your Asda Rewards account.
- 5 We'll do the rest! We donate ££s to your chosen school every time you shop, so they can spend it on exactly what they need.

Selected stores. Maximum spend £25. Exclusions apply including Asda Express & George.com. Subject to availability. UK 16+. App & Opt-in required. Cash of the value of your purchase donated to school. Funds funded through Asda Rewards app. To avoid a charge 107855. Full T&Cs at asda.com/askparentforchoice. Rewards T&Cs at asda.com/rewards/terms. Ends 30/3/24

77010\_CASHPOT\_FOR\_SCHOOLS\_AA\_POSTER.indd 1

26/08/2024 12:05

## School Uniform - Lost Property and Preloved Uniform

---

**Lost Property** - after just a few weeks into term there is already a large amount of lost property in school. If you are missing things please **check the box under the counter in the library**. Please ensure all items are labelled so we can reunite items with their owners.

**Pre-loved uniform** - there is now a clothes rail in the reception lobby where items of pre-loved uniform are available. Please pop and help yourself as required. We welcome donations of any preloved uniform. Please ensure items are washed, thank you.

---

## Join us in making a pact for a 'Smartphone Free Childhood'



### Kids & smartphones – what's the big deal?

When children first started getting smartphones a decade ago, there was no research about their impact. Now there is, and it's overwhelming.



#### HARMFUL CONTENT

Smartphones act as a gateway to pornography, violent and extreme content. Often kids don't seek them out but are exposed to them via algorithms and messaging apps. Once seen, these things can never be unseen. 90% of girls and 50% of boys say they're sent explicit content they didn't want to see.



#### ADDICTION

Tech companies intentionally make apps addictive, because the more time we spend, the more data they harvest, the more money they make. By leveraging dopamine circuits, they trigger brain responses akin to slot machine gambling. 1 in 4 young adults show signs of behavioural addiction to smartphones.



#### ACADEMIC DISTRACTION

The average teen receives 237 smartphone notifications a day – one every few minutes – making focusing on schoolwork hard. Studies show that excessive smartphone use has negative impacts on academic performance. Children at schools with effective smartphone bans get GCSE's 1-2 grades higher.



#### GROOMING

Sites like TikTok, Snapchat and Roblox are used by sexual predators to target children with their first smartphones, blackmailing them into sharing sexual content. Sextortion is now the fastest growing crime against teens. Since 2022, there has been a 66% rise in 'self generated' sexual abuse imagery of children under 10.



#### CYBERBULLYING

Disagreements between pupils used to stop at the school gate, now they follow kids wherever they go, 24/7. Young people who experience cyberbullying are twice as likely to attempt suicide and self-harm. One in six teens report being cyberbullied in the past month, according to the World Health Organisation.



#### MENTAL ILLNESS

Rates of depression, anxiety and suicide in young people have spiked globally since 2010, when children first began getting smartphones. The first generation to grow up with smartphones are now adults – data shows that the younger they got their first smartphone, the worse their mental health today.



#### OPPORTUNITY COST

Underpinning all these harms is one that is potentially the most significant of all. For the first time in human history, children are spending more time on devices than they are playing – an activity crucial to our healthy development. Smartphones are experience blockers, distracting children from engaging in the real world. The average UK 12-year-old now spends 29 hours a week – equivalent to a part-time job – on their smartphone. This leaves little time for the real world activities and relationships that enable us to learn the essential life skills we need to transition into adulthood. The average daily time that teens spend with friends has plummeted by 65% since 2010.

Join the grassroots parents movement to protect childhood from Big Tech

[www.smartphonefreechildhood.co.uk/join](http://www.smartphonefreechildhood.co.uk/join)

For all links to stats references see [www.smartphonefreechildhood.co.uk/the-problem](http://www.smartphonefreechildhood.co.uk/the-problem)

---

*What's the problem with kids and smartphones? When children first started getting smartphones a decade ago, there was no research about their impact. Now there is, and it's overwhelming. Exposing children to things their brains aren't yet developed enough to deal with can cause a whole host of problems, from triggering anxiety and eating disorders, to opening the door to cyberbullying or sexual predators, according to the latest research. **When we give our children access to the whole world in their pocket, we give the whole world access to our children.***

<https://smartphonefreechildhood.co.uk/>

---

## Swimming Lessons 24/25

---

*We are changing the organisation and delivery of swimming lessons from September 2024. We will continue to go to Shrewsbury School for lessons but these will now start for children in Year 4 and 5 for eight weeks. This will mean that these year groups have dedicated sessions to develop their competence and proficiency in the water.*

*Any Year 5 children who are unable to swim 25 metres at the end of these blocks will be offered additional small group lessons in Year 5 & 6.*

*We know that younger children may be disappointed to not be going swimming with school, but we hope that by having smaller, focused groups with more lessons provided, the children will benefit greatly from these new arrangements. Lessons will end for Y4 & Y5 after their final session on Wednesday 6th November. **Year 6 will commence their lessons on Wednesday the 13th November.***

*Please check ParentPay to provide consent and a contribution towards the cost of these lessons. We are again this year subsidising 50% of the cost of these lessons. If you are unable to make a contribution please contact Mrs Johnson or Mrs Bradshaw to request support. Thank you*

---

LONGDEN SWIMMING SCHEDULE 2024-25 AY				
Year Group	Weeks in Block	Dates	Weekday	Session Time
Year 4 and 5	1	11/09/2024	Wednesday	11.15am-12.15pm
Year 4 and 5	2	18/09/2024	Wednesday	11.15am-12.15pm
Year 4 and 5	3	25/09/2024	Wednesday	11.15am-12.15pm
Year 4 and 5	4	02/10/2024	Wednesday	11.15am-12.15pm
Year 4 and 5	5	09/10/2024	Wednesday	11.15am-12.15pm
Year 4 and 5	6	16/10/2024	Wednesday	11.15am-12.15pm
Year 4 and 5	7	23/10/2024	Wednesday	11.15am-12.15pm
Year 4 and 5	8	06/11/2024	Wednesday	11.15am-12.15pm

## Longden CE Primary School and Nursery - Terms and Holiday Programme 2024-25

---

*Longden CE Primary School and Nursery - School Terms and Holiday Programme 2024/25*

**<https://www.longden.shropshire.sch.uk/term-dates-and-school-opening-hours/>**

---

September 2024							October 2024							November 2024							December 2024							January 2025						
M	2	9	16	23	30		M	7	14	21	28		M	4	11	18	25		M	2	9	16	23	30	M	6	13	20	27					
T	3	10	17	24			T	1	8	15	22	29	T	5	12	19	26		T	3	10	17	24	31	T	7	14	21	28					
W	4	11	18	25			W	2	9	16	23	30	W	6	13	20	27		W	4	11	18	25		W	1	8	15	22	29				
Th	5	12	19	26			Th	3	10	17	24	31	Th	7	14	21	28		Th	5	12	19	26		Th	2	9	16	23	30				
F	6	13	20	27			F	4	11	18	25		F	1	8	15	22	29	F	6	13	20	27		F	3	10	17	24	31				
S	7	14	21	28			S	5	12	19	26		S	2	9	16	23	30	S	7	14	21	28		S	4	11	18	25					
Su	1	8	15	22	29		Su	6	13	20	27		Su	3	10	17	24		Su	1	8	15	22	29	Su	5	12	19	26					

February 2025							March 2025							April 2025							May 2025							June 2025						
M	3	10	17	24			M	3	10	17	24	31	M	7	14	21	28		M	5	12	19	26		M	2	9	16	23	30				
T	4	11	18	25			T	4	11	18	25		T	1	8	15	22	29	T	6	13	20	27		T	3	10	17	24	31				
W	5	12	19	26			W	5	12	19	26		W	2	9	16	23	30	W	7	14	21	28		W	4	11	18	25					
Th	6	13	20	27			Th	6	13	20	27		Th	3	10	17	24		Th	1	8	15	22	29	Th	5	12	19	26					
F	7	14	21	28			F	7	14	21	28		F	4	11	18	25		F	2	9	16	23	30	F	6	13	20	27					
S	1	8	15	22			S	1	8	15	22	29	S	5	12	19	26		S	3	10	17	24	31	S	7	14	21	28					
Su	2	9	16	23			Su	2	9	16	23	30	Su	6	13	20	27		Su	4	11	18	25		Su	1	8	15	22	29				

July 2025							August 2025						
M	7	14	21	28			M	4	11	18	25		
T	1	8	15	22	29		T	5	12	19	26		
W	2	9	16	23	30		W	6	13	20	27		
Th	3	10	17	24	31		Th	7	14	21	28		
F	4	11	18	25			F	1	8	15	22	29	
S	5	12	19	26			S	2	9	16	23	30	
Su	6	13	20	27			Su	3	10	17	24	31	

		School Day	190
		School Holiday	57
		Bank Holiday	8
		PD Days	5

Autumn 1st Half	38	days
Autumn 2nd Half	35	days
Spring 1st Half	29	days
Spring 2nd Half	35	days
Summer 1st Half	18	days
Summer 2nd Half	35	days
Staff Total	195	days
Pupil Total	190	days
<small>(Pupils required to attend for 190 days)</small>		

<b>2024/2025</b>
------------------

## Key Longden Calendar Dates for the 24/25 academic year

An overview of all the key dates of events and activities throughout the 24/25 academic year is now available on our website: <https://longden-shropshire.secure-primariesite.net/term-dates/>

### Dates for the diary - Autumn Term

### Christmas Performances - **Mon 16th & Tue 17th Dec 24**

This year children will be taking part in performances as three groups.

Nursery performance is on Wednesday 18th December (in the afternoon, time to be confirmed)

Willow and Maple Class performances are on Monday 16th December at 2pm and Tuesday 17th December at 6pm.

Ash, Chestnut and Oak performances are on Monday 16th December at 6pm and on Tuesday 17th December at 1.30pm.

### Sealegs Puppet Show at Longden - **Thursday 19th Dec 24**



Whole School - Sleeping Beauty Pantomime @ Theatre Severn -  
**Friday 10th Jan 25**

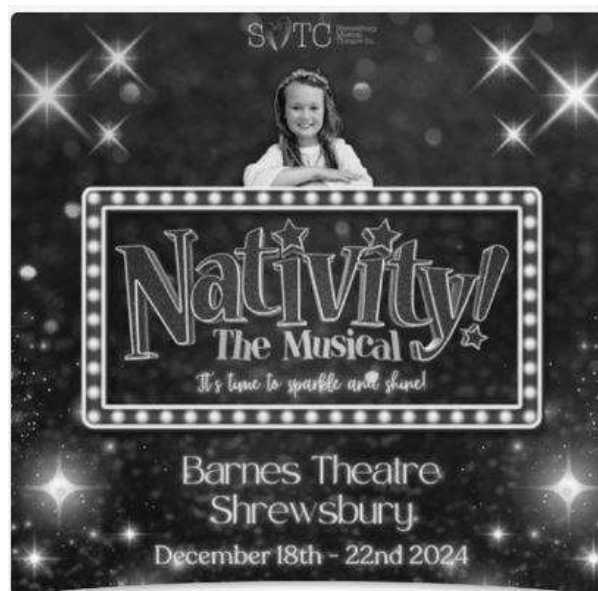
Nativity The Musical, Barnes Theatre, Shrewsbury, Wed 18th  
December 2024 - Sun 22nd December 2024

---

*One of our pupils, Rowan, will be appearing in this production. Follow this link to get tickets for this family show in December. Good luck Rowan!*

*Nativity! The Musical Tickets <sup>3</sup>*

---



---

<sup>3</sup><https://www.ticketsource.co.uk/whats-on/shrewsbury/barnes-theatre/smtc-presents-nativity-the-musical/e-zmjmeb>

# Passmaster Coaching- All Girls Development Squad



September 2024

## **Launch of all-girls development squad in Shropshire**

A Shropshire-based sports coaching company has launched a new all-girls football development squad to give U10 and U11 players greater access to advanced-level training.

The development programme, led by experienced professional UEFA B licence coaches, aims to help young female players develop their technical skills alongside their typical grassroots team.

The academy-style training programme, led by Passmaster Coaching, is run on Thursday evenings at London Road Sports Centre, Shrewsbury. The company is inviting a limited number of players to join the new squad. Players will also have opportunities to play development games against other teams.

"We wanted to give girls more opportunities to develop their technical skills, as the options are quite limited in Shropshire, and we were keen to promote the girls' game, which is growing all the time," said head coach and Passmaster director Lee Green.

"The programme is designed to complement any grassroots football teams or other sessions that players may already be attending, ensuring they continue to progress in a supportive and professional environment.

"Our goal is to help each child maximise their potential, allowing them to express themselves in every session."

The planned syllabus focuses on improving a wide range of technical skills, such as ball control, passing, dribbling and shooting, while enhancing players' overall understanding of the game.

The sessions are delivered by Lee Green and fellow coach Steve Green, who have extensive coaching experience developing young talent.

The parents of interested players are asked to email [contact@passmastercoaching.co.uk](mailto:contact@passmastercoaching.co.uk) with their child's name and the name of their current grassroots team.

Yours sincerely,

Tina Dean

Passmaster business manager

# Shropshire Parenting Help and Support Line

## Shropshire Parenting Help and Support Line

01743 250950

Mon - Thurs, 9.30am - 4.30pm

Fri, 9.30am - 3.30pm

No judgment, just support



## Does your child struggle with their sleep?

### Free Sleep Tight Workshops

Join us on one of our virtual or face-to-face workshops and:

- Find out why sleep is important for our health and emotional wellbeing
- Get support to help improve sleep and bedtime routines
- Meet other parents/carers to share and discuss experiences

Our next Workshops start:

Sleep Tight on Thursday 19th September 2024 from 12.45pm to 2.45pm Virtually via MS Teams

Sleep Tight SEND Friday 20th September 2024 from 9.30am to 11.30am at Wilfred Owen School, Shrewsbury, SY2 5SH

Sleep Tight SEND on Thursday 7th November 2024 from 12.45pm to 2.45pm Virtually via MS Teams

To book a place email [Parenting.team@shropshire.gov.uk](mailto:Parenting.team@shropshire.gov.uk) or call 01743 250950



## Raising any safeguarding concerns as a parent

- Please report your concerns to Shropshire First Point Of Contact on 0345 678 9021
- If you need to report concerns out of office hours please contact the Emergency Social Work Team<sup>4</sup> on 0345 678 9040 selecting option 1

You can also speak to:

- Protecting Vulnerable People (West Mercia Police): 0300 333 3000
- NSPCC: 0800 800 5000
- Childline: 0800 1111

You can also talk to Mrs Johnson in school.

If you want to report criminal behaviour, please telephone 0800 555 111 or go to <https://www.westmercia.police.uk/ro/report/ocr/af/how-to-report-a-crime/>

## Family Foundations for first time parents



**Baby on the way?**

**Feel confident with our Family Foundations group**

Is this your first baby together? Find out how Family Foundations could benefit your family, through one of our free, online, info sessions. Sessions will last 45 minutes with time for questions afterwards.

- Wed 6 Nov 2024, 5pm
- Mon 11 Nov 2024, 1pm
- Wed 13 Nov 2024, 9.30am
- Mon 9 Dec 2024, 1pm
- Fri 13 Dec 2024, 9.30am
- Wed 18 Dec 2024, 5pm

Email [parenting.team@shropshire.gov.uk](mailto:parenting.team@shropshire.gov.uk) to book

Find out more here →




Shropshire Council

---

<sup>4</sup><https://shropshire.gov.uk/emergency-social-work-team/>

## Shrewsbury Hockey Club



**ENJOY HOCKEY!  
AT SHREWSBURY  
HOCKEY CLUB**



Learn from fully qualified England Hockey accredited coaches.



**Children age 4-10** - Sundays at 10.30am-12pm.

**Children age 10+** - Tuesdays at 6-7pm & Wednesdays at 7-8.15pm.

Sessions at **Roman Road Sports Centre, Meole Brace School.**

✓ Beginners Welcome    ✓ Equipment Provided    ✓ Free Taster Session



  **Contact: James - 07837 708 773**  
shrewsburyhc\_juniors@outlook.com  
www.shrewsburyhockeyclub.co.uk

## Free School Transport

Is your child attending the nearest and/or catchment primary school and living two miles or more from school? If so, they may be entitled to receive free school transport. Please read through the guidance notes below and following that, should you wish to apply, please follow the link below.

You can apply for either free school transport at a community school or school transport assistance on denominational (religious) grounds

In order to be eligible to receive free school transport the following criteria must normally be met:

- The pupil must be ordinarily resident in Shropshire
- The pupil must be in attendance at either the nearest, or catchment area school and live more than 2 miles away (for primary aged pupils) or 3 miles away (for secondary aged pupils). Distances are measured using the shortest pedestrian route between the home and school.

<https://www.shropshire.gov.uk/school-transport/available-support/primary/>